

## Machine-knitted short-sleeved burial gown & cape



### Machine & materials

Knitted on a standard-gauge machine  
(Brother KH-881)

Acrylic yarn:  
2 ends of 2/30s or one end of 3-ply

Approx. finished weight including edging:

Gown: 10g (½ ounce)

Cape: 20g (¾ ounce)

Both: 30g (1¼ ounces)

Trimmed with a small quantity of 2-ply yarn in  
contrast colour, 3 mm wide satin ribbon and  
one small satin ribbon rose.

### Tension

Tension is not critical for this pattern; the  
following is just a guide.

40 sts = 12.5 cm; 60 rows = 14 cm

32 sts x 43 rows = 10 cm

Tension dial 4

Approx. finished length of gown: 19 cm (7½")

### Notes

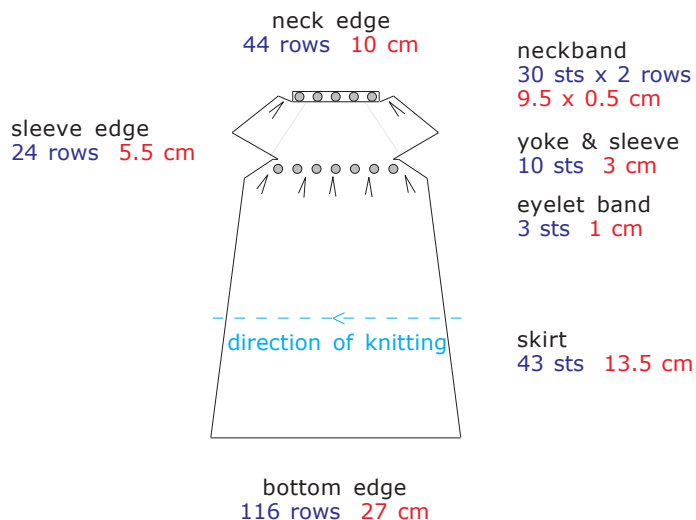
The main pieces of both gown and cape are  
knitted sideways, starting at centre-back for  
the gown and centre-front for the cape.

Both are knitted in 'sections' (of 8 and 6 rows  
for the gown and of 6 rows for the cape)  
using holding position for shaping. The  
instructions are for the 'auto-wrap' method of  
short-row knitting.

I weighted the work by re-hanging the cast-  
on comb at the end of each section, except  
for the sleeves, where I used a nylon cord to  
pull the knitting down.

If you wind off a separate small amount of  
yarn before beginning, this can be used to  
knit the sleeves. Then there's no need to cut  
and rejoin the yarn at the bottom edge.

## Burial gown



### Method

Cast on by hand over 28 + 28 stitches (left and right of centre zero) and knit 2 rows.

Reset row counter to 000 and knit first body section as follows:

### Body section

8 rows knitted over 56 needles; carriage set to hold

Row counter (RC) for first section:

- 000 Carriage on right (COR): bring 9 needles on left (28–20 L) to holding position (HP); knit to the left
- 001 bring 1 more needle on left (19 L) to HP; knit to the right
- 002 take all needles in HP back to upper working position (UWP); knit to the left
- 003 just knit to the right
- 004 transfer stitch 17 L to needle 16 L for eyelet hole, leaving empty needle in working position; bring 9 needles on left (28–20 L) to HP; knit to the left
- 005 bring 1 more needle on left (19 L) to HP; knit to the right
- 006 bring 2 more needles on left (18–17 L) to HP; knit to the left
- 007 bring 1 more needle on left (16 L) to HP; knit to the right
- 008 take the 4 needles in HP needles closest to the carriage (19–16 L) back to UWP section complete – COR and 9 needles in HP as at beginning

Knit 2 more body sections.

Transfer for eyelet at RC: 012, 020

When the 3rd body section is complete (RC 024), bring the needle of the left of the group in UWP (19 L) back to HP, reset RC to 000 and knit one underarm section as follows:

### **Underarm section**

8 rows knitted over 46 needles; carriage set to hold:

RC (for this section):

000 COR, 10 needles on left (Nos.28-19 L) in HP; knit 4 rows

004 transfer stitch 17 L to needle 16 L for eyelet hole, leaving empty needle in working position; knit to the left

005 just knit to the right

006 bring 3 more needles on left (18-16 L) to HP; knit two rows

008 section complete – COR

### **Sleeve**

Bring all needles to HP. Reset RC to 000.

Cut yarn (or use separate ball of yarn) and knit first sleeve section (over 10 stitches) as follows:

### **Sleeve section**

6 rows knitted over 10 needles – all other needles (18 L – 28 R) in HP throughout; carriage set to hold

Note that you may have to advance the row counter manually for these very short rows.

RC (for first section):

000 COR: take needles 27-19 L back to UWP, leaving 1 needle on left (28 L) in HP; knit to the left

001 bring one more needle on left (27 L) to HP; knit to the right

002 take the two needles in HP on the left back to UWP; knit to the left

003 just knit to the right

004 bring 1 needle on the left (28 L) to HP; knit to the left

005 bring 1 more needle on the left (27 L) to HP; knit to the right

006 take 1 needle (27 L) back to UWP section complete – COR and 1 needle in HP as at beginning.

Knit three more sleeve sections (to RC 024) and cut yarn.

Take needles 19 L – 28 R back to UWP.

### **Front**

Reset RC to 032 and knit 6 body sections (to RC 080).

Transfer for eyelet at RC: 036, 044, 052, 060, 068, 076.

### **To complete main part**

Knit one underarm section as before, knit 2nd sleeve, reset RC to 088, and knit 3 body sections for second half-back (to RC 112).

Transfer for eyelet at RC: 092, 100, 108

Cancel hold and knit 1 row at main tension (MT), then 1 row at MT+5 (RC 114), mark end st at neckline corner and cast off with the latch tool.

### **Neckband**

The neckband in the example shown was crocheted in contrast yarn with an eyelet edging (see page 5).

It could be knitted as follows:

WS facing, hang neckline evenly over 30 needles. MT, knit 2 rows.

Leaving empty needles in working position, transfer stitches for eyelets as follows: starting at one end, transfer stitch from 2nd and every following 3rd needle to the adjacent needle. This will leave one stitch after the final transfer at the other end.

Knit two rows and cast off.

### **Finishing**

Work four rows of double crochet with same yarn as for the knitting along back opening edges.

Using contrast yarn work one row of double crochet and a row of shell edging along the bottom edge.

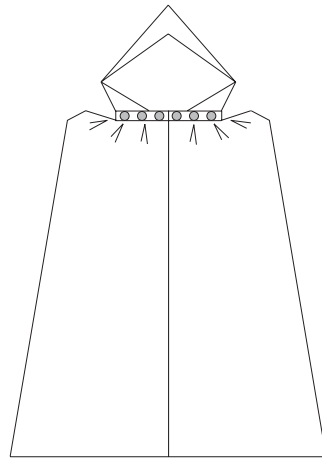
(See page 5 for crochet notes & diagrams.)

If you have knitted the neckband, finish the edges with double crochet.

The sleeve and underarm edges can be finished with crochet, but in the example shown they have been left as they came off the machine. The sleeve edges naturally curl under.

Thread 3 mm ribbon through eyelet holes at yoke and neckband. Sew rose in centre of yoke ribbon.

## Cape



neckband & hood  
54 sts x 38 rows  
17 x 9 cm

main part  
56 sts 17.5 cm

bottom edge  
152 rows 35.5 cm

### Main part

Cast on by hand over 28 + 28 stitches (left and right of centre zero) and knit 4 rows.

Reset RC to 000 and knit first section as follows:

### Cape section

6 rows knitted over 56 needles; carriage set to hold

RC (for first section):

- 000 COR: bring 2 needles on left (Nos.28-27 L) to HP; knit to the left
- 001 bring 1 more needle (26 L) to HP; knit to the right
- 002 take the 3 needles in HP (28-26 L) back to UWP; knit to the left
- 003 just knit to the right
- 004 bring 1 needle on left (28 L) to HP; knit to the left
- 005 bring 1 more needle on left (27 L) to HP; knit to the right
- 006 section complete  
2 needles in HP as at beginning

Knit 23 more cape sections.

### To complete the main part

At RC 144, cancel hold and knit 3 rows at normal tension, then knit one row at MT+5, mark end st at neckline corner, and cast off with the latch tool (RC 148).

### Neckband & hood

WS facing, hang neckline over 54 needles. This is almost one row-end per needle, so take care not to put one loop over two needles – if in doubt, e-wrap the yarn over all needles.

MT, knit two rows.

Leaving empty needles in working position, transfer stitches for eyelets as follows: starting at one end, transfer stitch from 2nd and then every following 3rd needle to the adjacent needle. This will leave one stitch after the final transfer at the other end.

Knit 36 more rows and knit to waste yarn.

### Finishing

Graft the hood-top seam.

With contrast yarn, work one row of double crochet around all edges. Work a row of shell edging on all edges except the ends of the neckband – slip-stitch over these bits. (See page 5 for crochet notes & diagrams.)

Thread 3 mm ribbon through eyelet holes in neckband.

## Eyelet edging (hook size 1.50mm)

On a foundation row of dc:

Row 1: 4 ch, miss next stitch,\*1 treble, 1 ch, miss next stitch; repeat from \* to end

Row 2: 1 ch, \*2 dc into each 1-ch space; repeat from \* ending with dc into last stitch

This gives an edge of small eyelets for threading very narrow ribbon.

## Crochet shell edging

Can be worked on a foundation row of double crochet direct into the fabric edge, or on a foundation chain and then attached to the edge. I prefer the look of this edging on the 'wrong' side.

### 1 Basic pattern (1st diagram) - multiple of 4 stitches plus 1:



Multiple of 4 sts + 1

3 chain to stand as first treble, 1 treble into same place

\*miss a stitch, 1 double crochet into next stitch,  
miss a stitch, 4 trebles into next stitch

Repeat from \*

ending with miss a stitch, two trebles into last stitch

### 2 How to fit the pattern into a multiple of 4 plus 3 stitches:



Multiple of 4 sts + 3

### 3 & 4 Two ways of turning a corner:

If working double crochet into the fabric edge, work three stitches into same place at the corner - the second of these is the 'corner' stitch in the diagrams below

